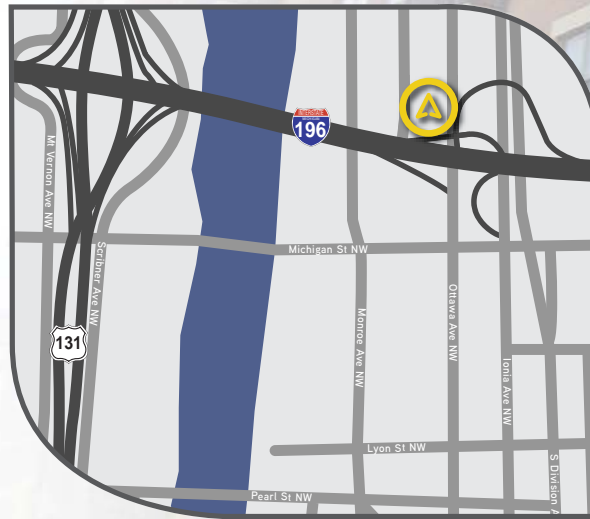


Unit Features

- FREE, covered, temperature controlled parking
- Stunning city and river views
- Stainless steel GE Profile appliances
- Granite countertops throughout
- Whirlpool stackable front loading washer and dryer
- Homecrest cabinetry
- Ceramic tile floors - kitchen and bath
- Peerless brushed nickel faucets
- Ceramic tile backspalsh around tub
- Rolling shade-blinds
- Individually metered electric
- Spacious walk-in closets
- Staggered and separated wall systems with sound transmission control rating of "60 Plus" for increased privacy

Bulding Amenities

- Secured intercom system for guest entry
- Fitness center
- Community room
- Highspeed elevators
- Decorative streetscape with restored neighborhood fixtures



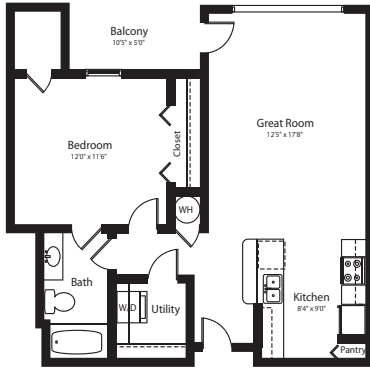
ICON ON BOND



538 Bond Avenue NW, Grand Rapids, MI 49503
tel: 616 608 3577 fax: 616 608 5573
www.icononbondapartments.com

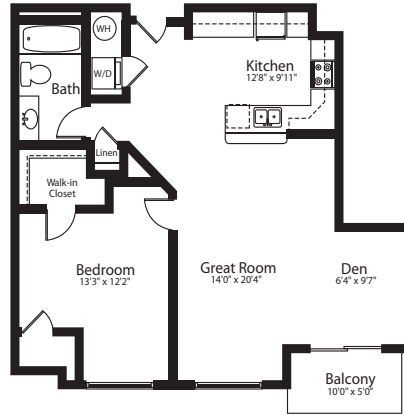
New Yorker
728 SF
1 Bedroom
1 Bath

\$ _____



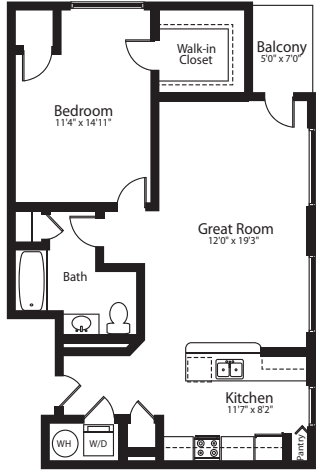
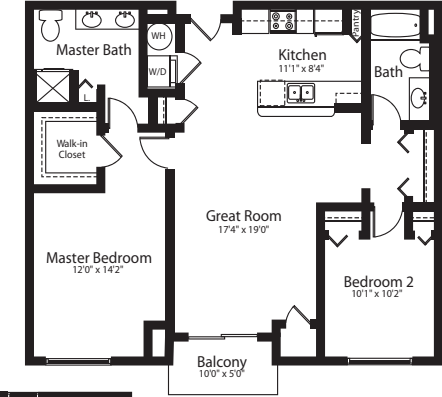
Chicagoan
959 SF
1 Bedroom
1 Bath

\$ _____



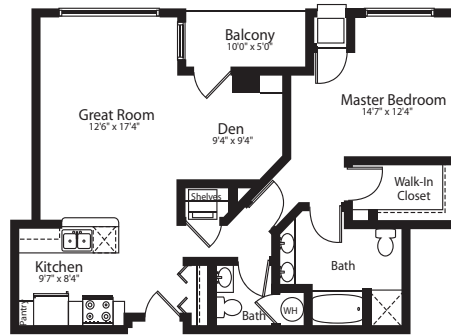
Fairmont
1,122 SF
2 Bedroom
2 Bath

\$ _____



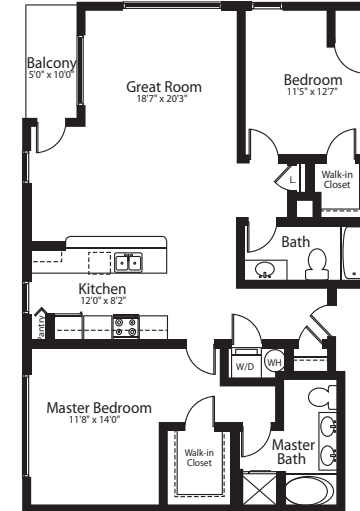
Bostonian
827 SF
1 Bedroom
1 Bath

\$ _____



Miami
973 SF
1 Bedroom & Den
1.5 Bath

\$ _____

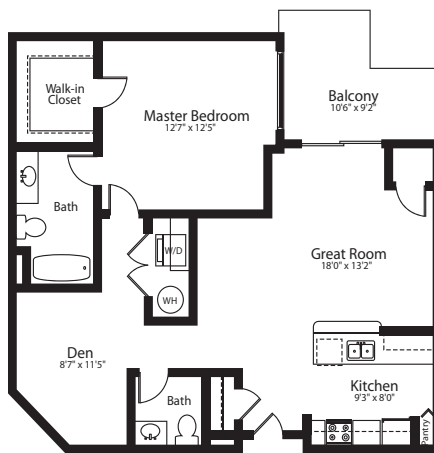


Intercontinental
1,297 SF
2 Bedroom
2 Bath

\$ _____

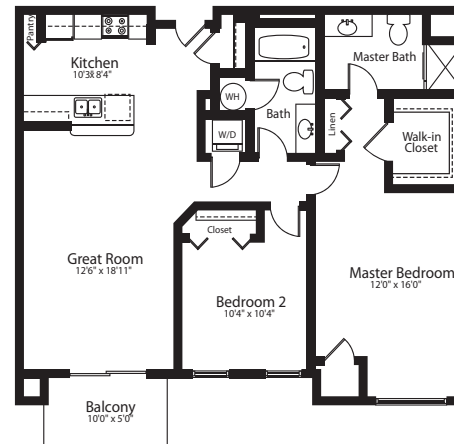
Vegas
891 SF
1 Bedroom, & Den
1.5 Bath

\$ _____



Waldorf
1,081 SF
2 Bedroom
2 Bath

\$ _____



The Ritz
1,418 SF
2 Bedroom
plus den
2 Bath

\$ _____

