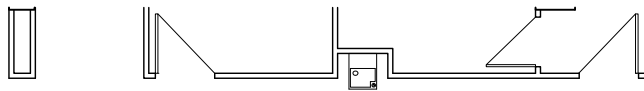


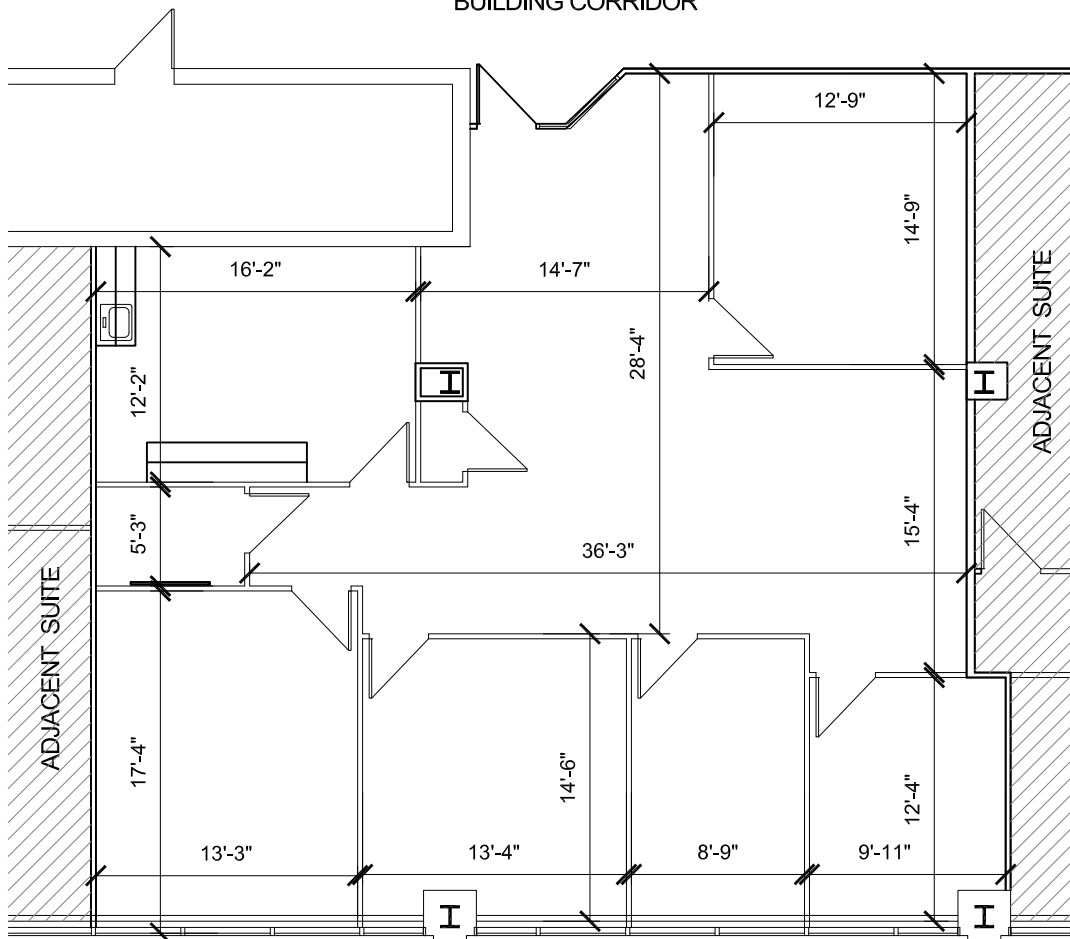
Travelers Tower I



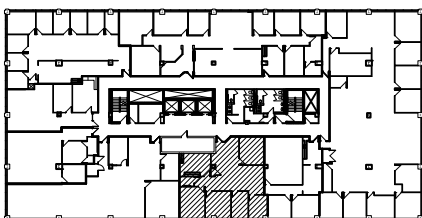
SUITE 1290
2,012 RSF



BUILDING CORRIDOR



EXTERIOR GLASS



KEY PLAN

For leasing information contact:

Daniel Canvasser 248.350.8141
Mike Valant 248.357.6568

dcanvasser@ngkf.com
mvalant@ngkf.com



TIME EQUITIES INC.